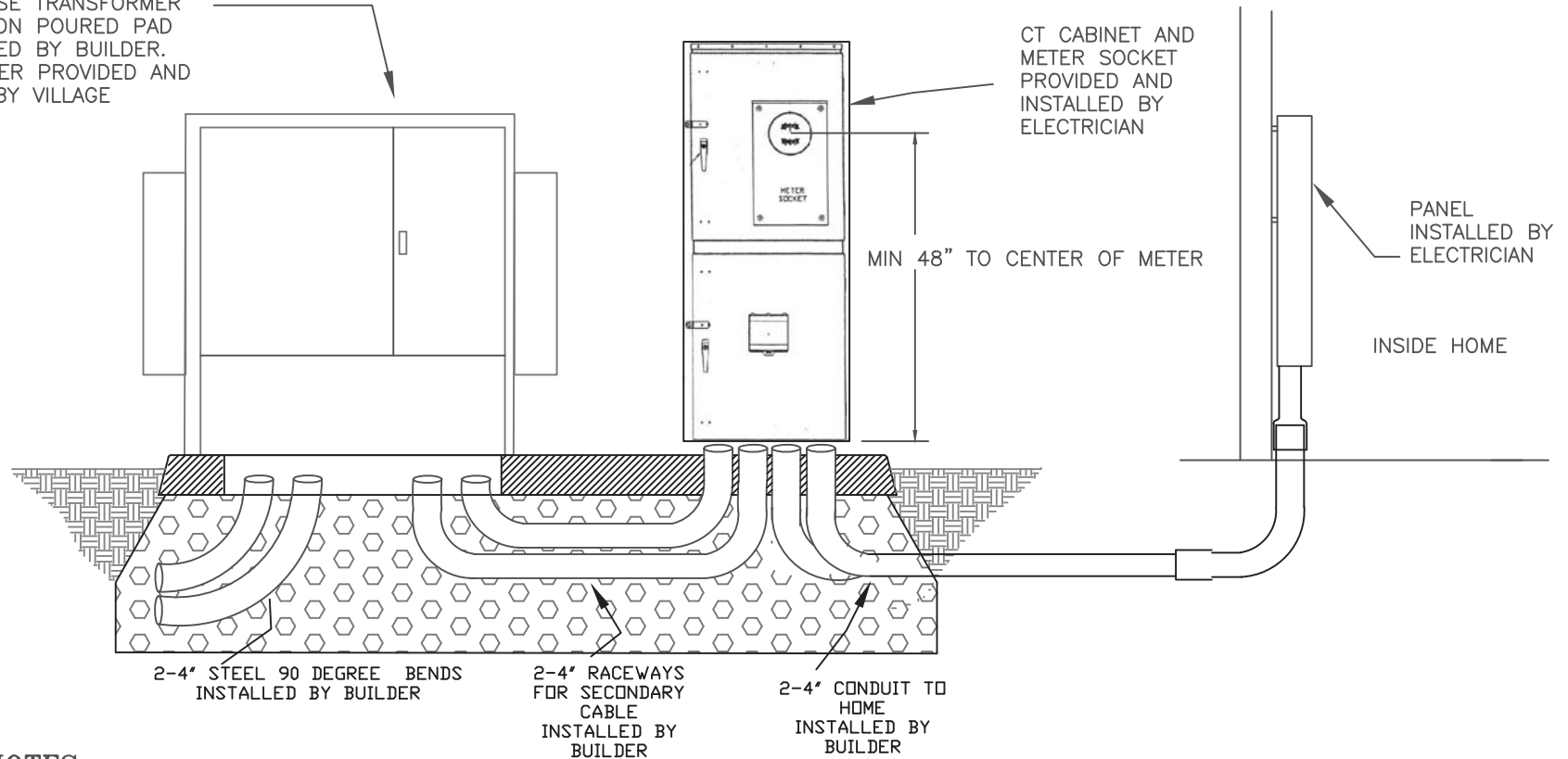


TYPICAL THREE PHASE SERVICE INSTALLATIONS

INSTALLATION TWO

THREE PHASE TRANSFORMER
INSTALLED ON POURED PAD
CONSTRUCTED BY BUILDER.
TRANSFORMER PROVIDED AND
INSTALLED BY VILLAGE



CT CABINET AND
METER SOCKET
PROVIDED AND
INSTALLED BY
ELECTRICIAN

MIN 48" TO CENTER OF METER

PANEL
INSTALLED BY
ELECTRICIAN

INSIDE HOME

2-4" STEEL 90 DEGREE BENDS
INSTALLED BY BUILDER

2-4" RACEWAYS
FOR SECONDARY
CABLE
INSTALLED BY
BUILDER

2-4" CONDUIT TO
HOME
INSTALLED BY
BUILDER

NOTES:

1. SEE SHEET 3 FOR PAD SPECIFICATION FOR INSTALLATION TWO
2. IN INSTALLATION TWO, CT CABINET MAY ALSO BE FREESTANDING ON A POURED CONCRETE PAD SEPARATE FROM THE TRANSFORMER
3. W&E DEPARTMENT TO PROVIDE AND INSTALL INSTRUMENT TRANSFORMERS (CTs and PTs) AS WELL AS METER IN CABINET PROVIDED BY ELECTRICIAN
4. VILLAGE OPERATES AND MAINTAINS ELECTRIC CABLE FROM CT CABINET INTO MAIN PANEL AS WELL AS PRIMARY CABLE TO TRANSFORMER
5. CUSTOMER OWNS, OPERATES AND MAINTAINS ELECTRIC CABLE FROM CT CABINET INTO MAIN PANEL



VILLAGE OF WINNETKA

WATER & ELECTRIC DEPARTMENT
1390 WILLOW RD.
WINNETKA, IL 60093
(847) 716-3558 tel. (847) 716-3599 fax.
www.villageofwinnetka.org

Project Number
Three Phase Installation - Style Two

Drawn
NAS

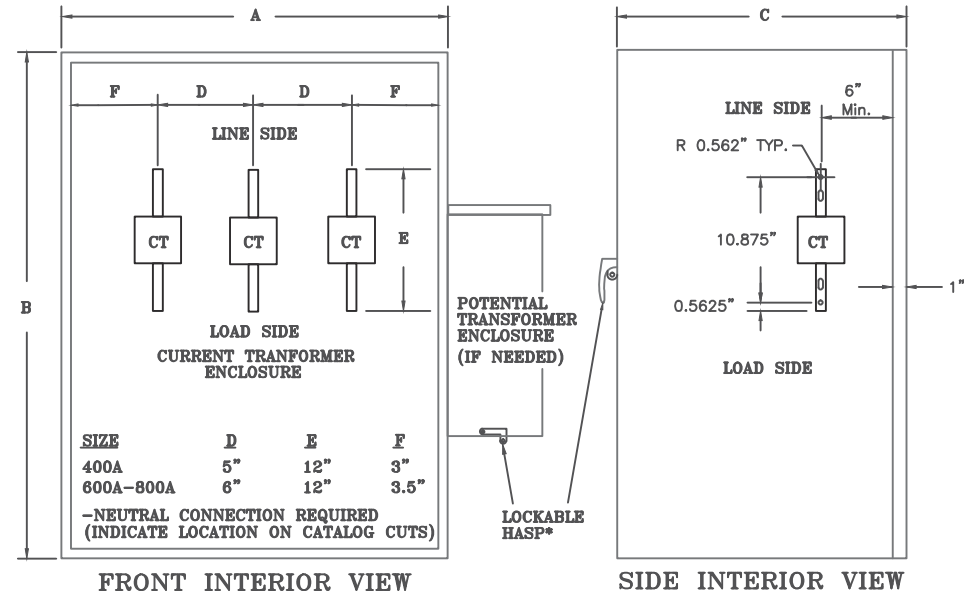
Sheet
Sheet 1

Scale
Not To Scale

Date
6/6/2017

Approved
BLK

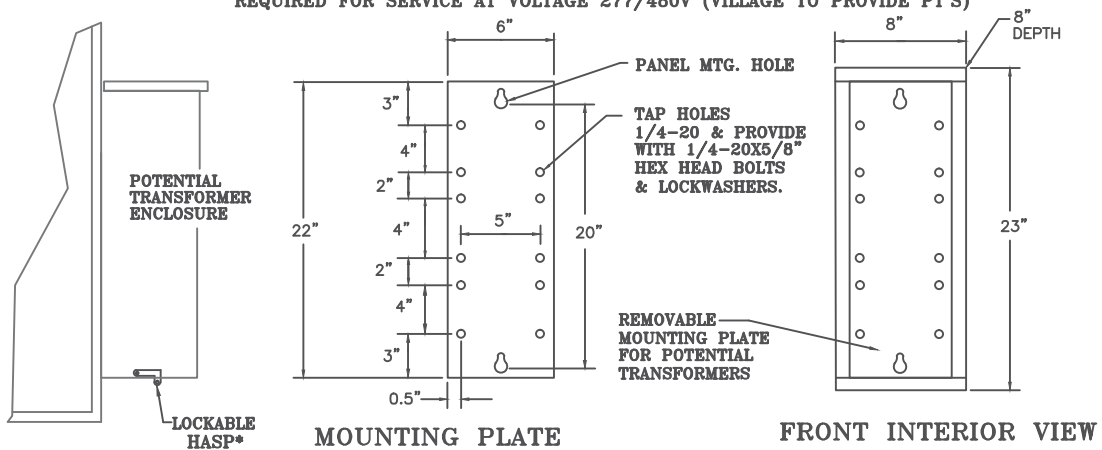
INSTRUMENT TRANSFORMER DIMENSIONS SPECIFICATION



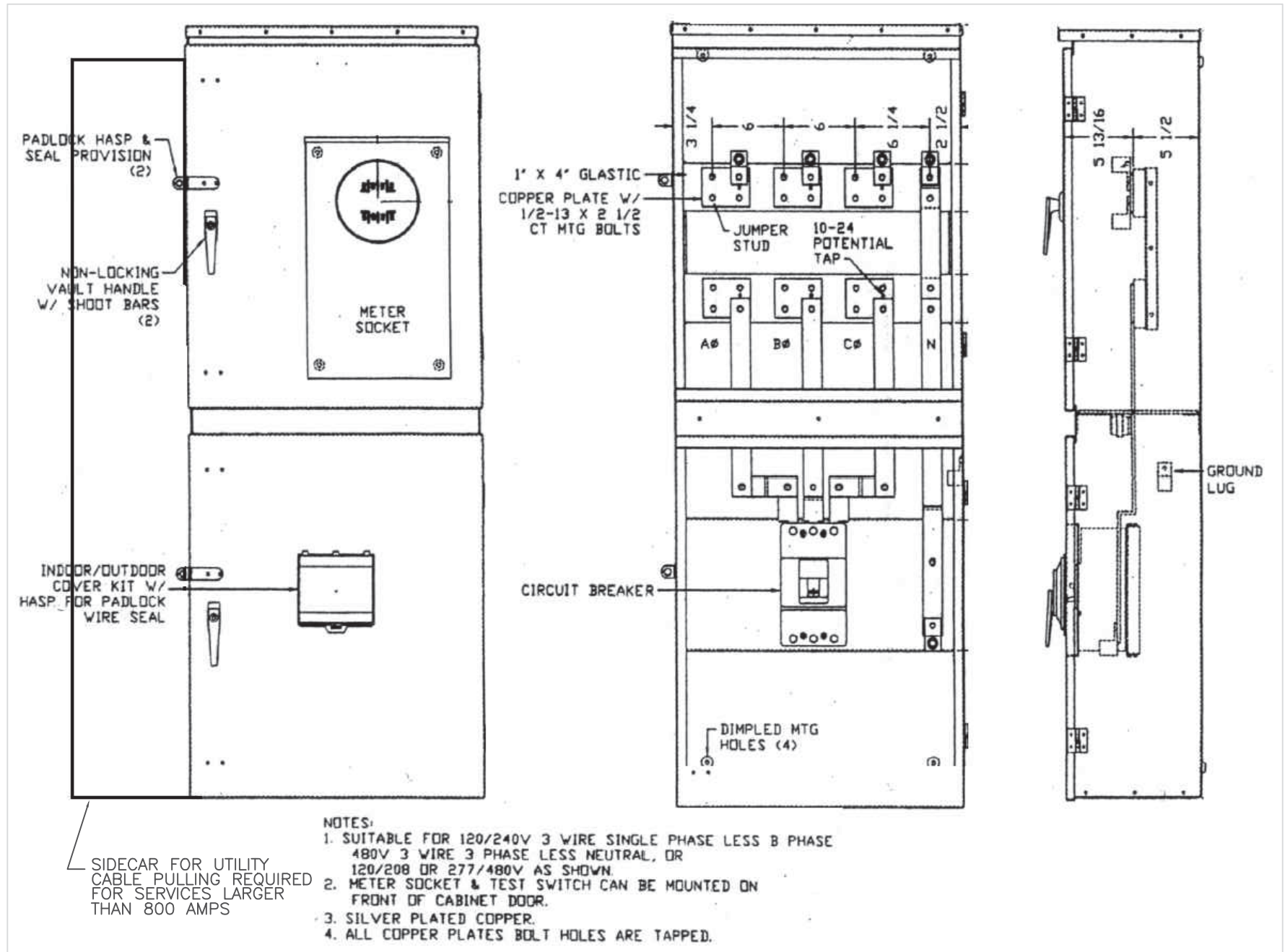
Single Phase Current Transformer Cabinet		A (Width)	B (Height)	C (Depth)
"TRUE" 400 A	2-CTs	24"	42"	11"
Three Phase Current Transformer Cabinet		A (Width)	B (Height)	C (Depth)
200 A - 600 A	3-CTs	24"	42"	11"
800 A and ABOVE	3-CTs	26"	42"	12"

*For W&E lock only - Enclosure not to be locked by customer. All accessible compartments with Service Entrance Cables must be lockable.

POTENTIAL TRANSFORMER ENCLOSURE
REQUIRED FOR SERVICE AT VOLTAGE 277/480V (VILLAGE TO PROVIDE PT'S)



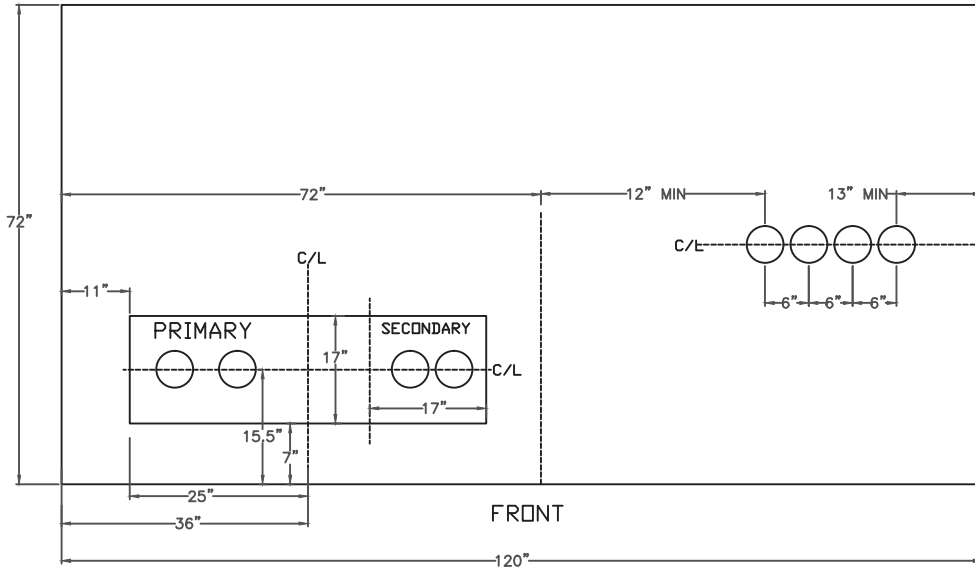
EXAMPLE CT CABINET CUT SHEET



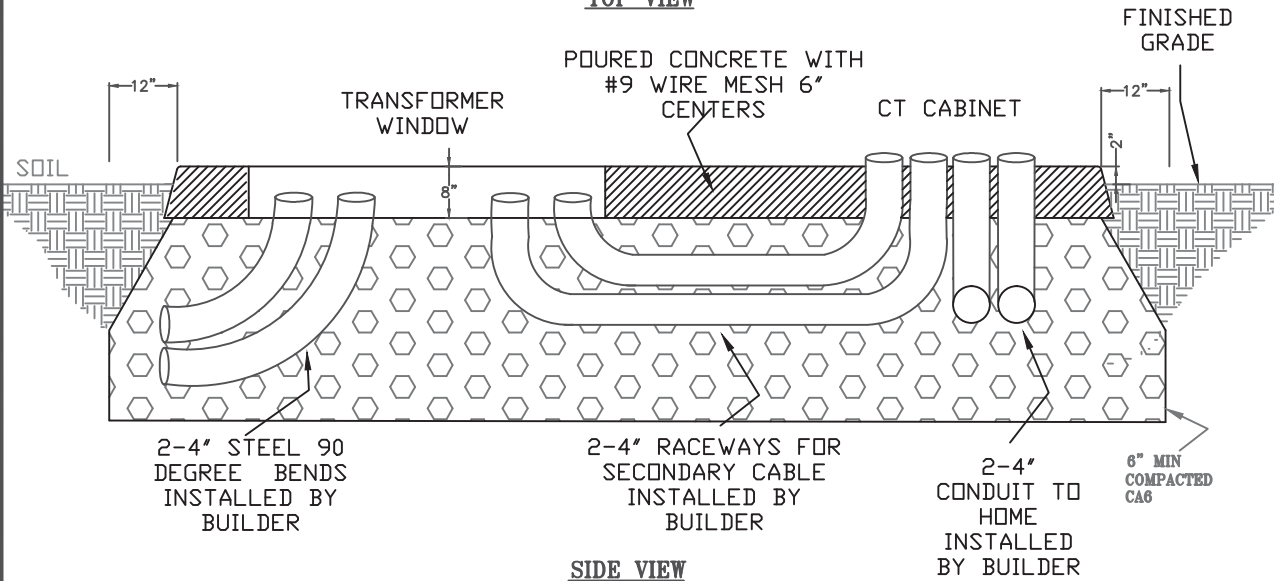

VILLAGE OF WINNETKA
WATER & ELECTRIC DEPARTMENT
1390 WILLOW RD.
WINNETKA, IL 60093
(847) 716-3558 tel. (847) 716-3599 fax.
www.villageofwinnetka.org

Project Number Three Phase Service Installation	Drawn NAS
Sheet Sheet 2	Scale Not To Scale
Date 6/6/2017	Approved BLK

FOUNDATION FOR 3 PHASE
TRANSFORMER AND CT/METER
CABINET
600 TO 800A SERVICE



TOP VIEW



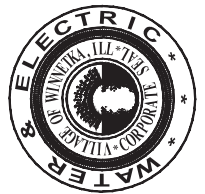
SIDE VIEW

NOTES:

1. CUSTOMER CONTRACTOR TO INSTALL ALL CONDUIT BENDS AND CONCRETE AS SPECIFIED ABOVE. VILLAGE CONTRACTOR TO CONNECT CONDUITS TO PROVIDED BENDS
2. W&E DEPARTMENT TO INSTALL TRANSFORMER ON PROVIDED PAD AND CUSTOMER CONTRACTOR TO INSTALL CT CABINET
3. CUSTOMER OWNS, OPERATES AND MAINTAINS ELECTRIC CABLE FROM CT CABINET INTO MAIN PANEL
4. VILLAGE OPERATES AND MAINTAINS ELECTRIC CABLE FROM CT CABINET INTO MAIN PANEL AS WELL AS PRIMARY CABLE TO TRANSFORMER

VILLAGE OF WINNETKA

WATER & ELECTRIC DEPARTMENT
1390 WILLOW RD.
WINNETKA, IL 60093
(847) 716-3558 tel. (847) 716-3599 fax.
www.villageofwinnetka.org



Project Number
**THREE
PHASE
SERVICE
SPECS**

Drawn
NAS

Date
6/6/17

Scale
Not To Scale

Sheet
Sheet 3

Approved

BLK